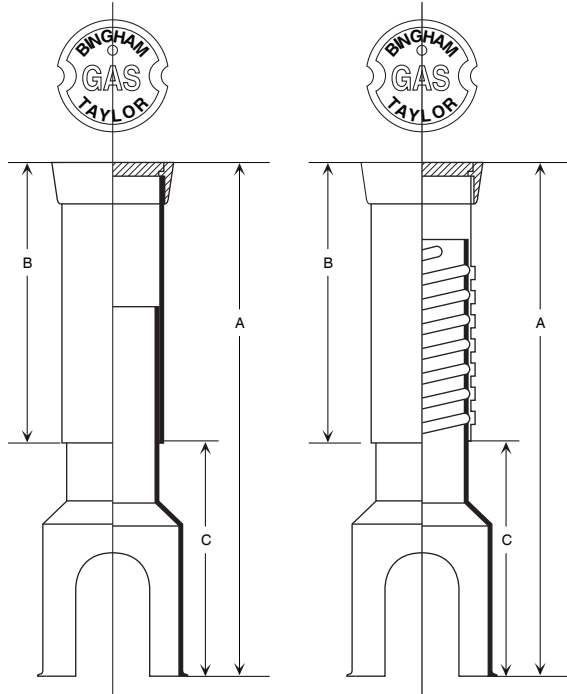


SERIES 400 — 4" Service Boxes



Series 400

Size No. Screw or Sliding Type	Extension Range - A	Length Top-B	Length Bottom-C
1	26"-34"	12"	24"
2	26"-40"	18"	24"
3	26"-46"	24"	24"
4	32"-54"	27"	30"

Fig. No. 445
4" Shaft Plastic Service Box

- Several cast iron rims and lids available. See below.
- Cast iron rim bonded to A.B.S. Plastic top tube.
- For use with curb stops with 2" square operating nut.
- Slide or screw adjustment available.
- Bell arched and flanged — without arch when specified.
- Multiple bell designs available to fit assorted valves. See below and pages 7, 8 and 12.
- All lids furnished with "Water" or "Gas" imprint as specified — other imprints available at additional charge.
- Please SPECIFY RIM STYLE, SCREW OR SLIDE ADJUSTMENT AND BOTTOM BELL STYLE when ordering.

Extension Ordering Table

Size No. Screw or Sliding Type	Extends Length Dim. A	Extends Length Dim. B
P418	14"	18"
P424	20"	24"
P430	26"	30"
P436	32"	36"

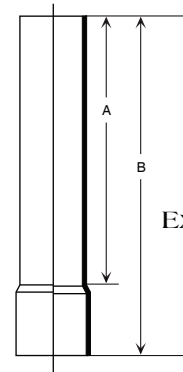


Fig. No.
400X
Extension

Top Section: Rims & Lids

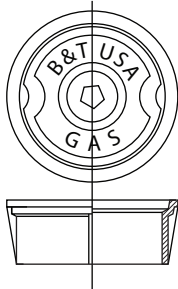


Fig. 445DT
Drop-Tum Rim & Lid

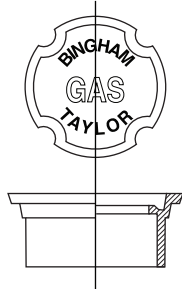


Fig. No. 445BUG
Drop-In Rim & Lid

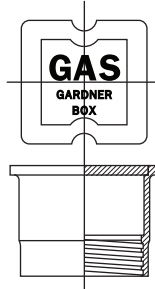


Fig. No. 450
Square Rim & Lid

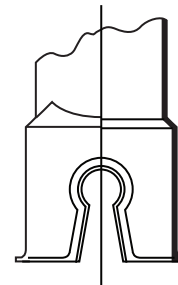
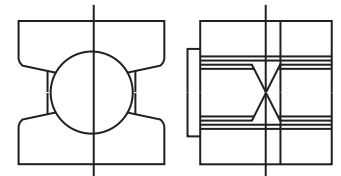


Fig. No. 020
Bell Bottom



BTVS020P
Support for 1/2" - 1 1/4"
Perfection Valves

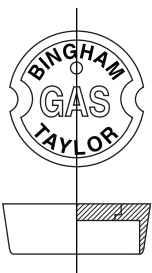


Fig. No. 445
Rim & Lid

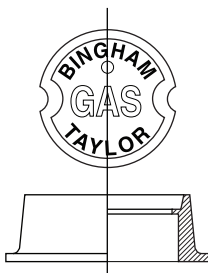


Fig. No. 448
Flanged Rim & Lid

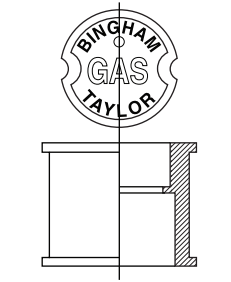


Fig. No. 460 RPV
Round Rim &
Flange With Lid



Fig. No. P4HL
Rim & Lid

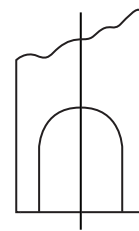
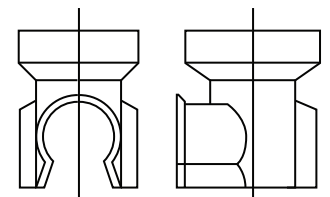


Fig. No. 022
Bell Bottom



BTVS022M
Support for 1" - 2"
Mueller Valves