

# 2 1/2" Cast Iron Curb Service Boxes

Fig. No.  
4901

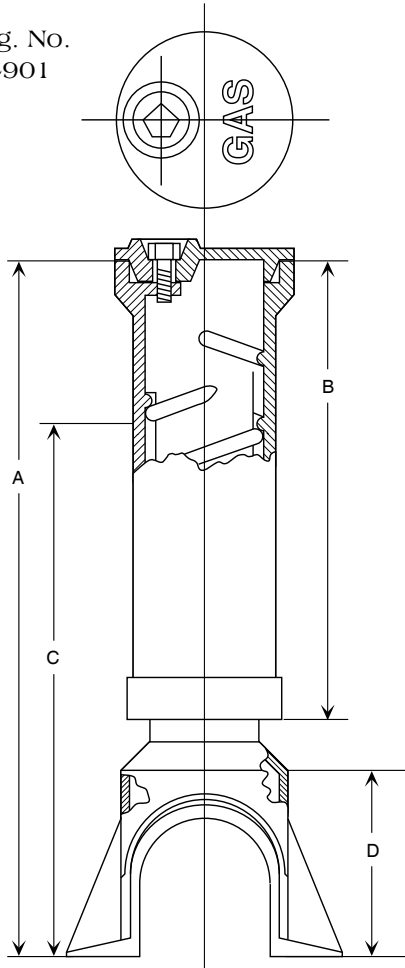


Fig. No. 4901  
2 1/2" Service Boxes Complete

- We will ship Fig. No. 4901 new style service boxes unless specified.
- The new style upper section with inlaid cover adds strength, and especially adapts the box for use in cement driveways and sidewalks.
- A complete service box consists of lid with pentagon head bolt, top section and bottom section.
- Certain sizes of these boxes are available in sliding type and/or with top sections as shown in description below. Please inquire.

Reference Table — Dimensions in Inches, Weight in Lbs.

Size No.	Extension Range - A	Top Section & Cover			Bottom Section				Total Weight
		No.	Wt.	Dim. B	No.	Wt.	Dim. C	Dim. D	
93-D	33"-46"	D	16.1	20.0"	93	15.8	28.0"	6.5"	31.9
93-E	33"-50"	E	19.6	23.5"	93	15.8	28.0"	6.5"	35.4
94-D	40"-56"	D	16.1	20.0"	94	22.3	37.5"	6.5"	38.4
94-E	40"-60"	E	19.6	23.5"	94	22.3	37.5"	6.5"	41.9
94-F	38"-66"	F	26.1	29.0"	94	22.3	37.5"	6.5"	48.4

When Ordering Specify: Fig. No. — Size No. — Cover Marked GAS or WATER or Special Lettering at Extra Cost.

## Optional Top Sections

Check for size availability.

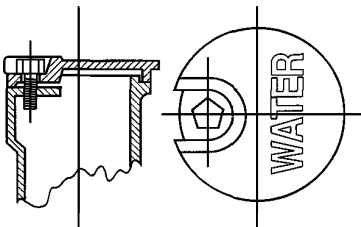


Fig. No. 4901-A  
2 1/2" Old Style Top & Cover  
Note Different Style Top

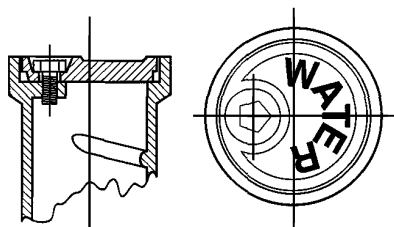


Fig. No. 4901-B  
2 1/2" New Style Flush Fit Cover  
Only Cover is Different Style

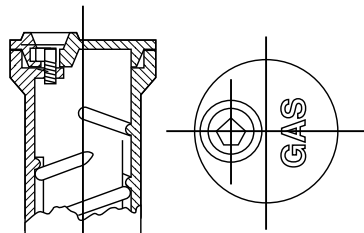


Fig. No. 4901-C  
2 1/2" New Style Top & Cover

## Service Box Extensions

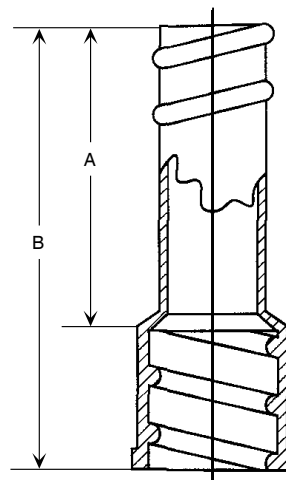


Fig. No.  
4901-X

Size No.	Increases Length A	Overall Length B	Total Weight
151	9.5	13	6
152	16.5	20	8

Drawing Shows  
Stationary Rod, Ring  
and Pin in Position and  
Complete Box Resting  
on Foot Piece.

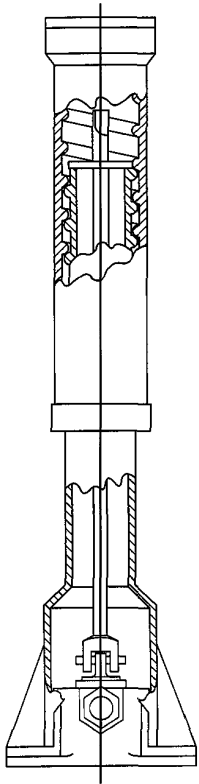


Fig. No. 4901-R

## Accessories for 2 1/2" Service Boxes

- Fig. No. 4901-R  
**Stationary Rod, Ring & Pin**  
For use with all boxes when permanent stationary rod is desired at installation.
- Fig. No. 4950  
**Combination Key**  
18", 27", 36", or as long as specified. This key has 12" TEE handle.  
The socket has wrench for removing pentagon bolt and is slotted to operate the stationary rod. Pick on one end.
- Fig. No. 4951, 4952, 4953 & 4954  
**Pentagon Head Bolt**  
Has standard waterworks head and thread.
- Fig. No. 4960  
**Hand Key**  
For operating pentagon head bolt.
- Fig. No. 4970  
**Foot Piece**  
A stop cock holder available in the following curb cock sizes: 3/4", 1" and 1 1/4".
- Fig. No. 4980  
**No. 14-E Enlarged Base**  
Used with complete service box for curb stops up to 2". Increases box length 6 inches.

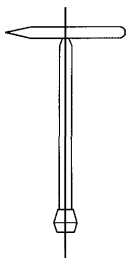


Fig. No. 4950

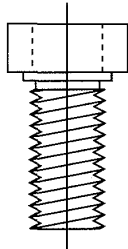


Fig. No. 4951 (Brass)

Fig. No. 4952 (Corten Steel)

Fig. No. 4953 (Aluminum)

Fig. No. 4954 (Security Bolt)

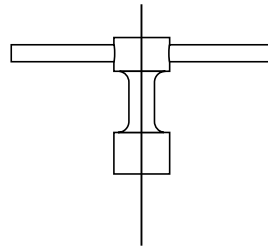


Fig. No. 4960

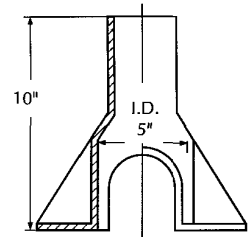


Fig. No. 4980

## Repair Lids

Lettered Water or Gas  
as Specified

- Repair lids are designed for use when boxes in the ground have been damaged and it is not desirable to break the ground to replace the lids.
- These lids can be furnished as a substitute for our standard curb box lids at a slightly higher price.

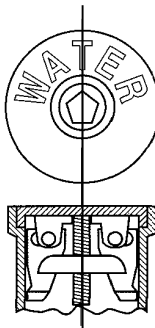


Fig. No. 4901  
Flush NSR  
New Style Repair Lid



Fig. No. 4901-NSR  
New Style Repair Lid

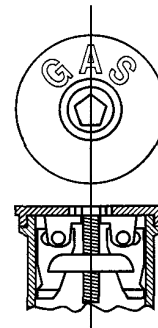


Fig. No. 4901-OSR  
Old Style Repair Lid  
for No. 4901-R  
Service Box

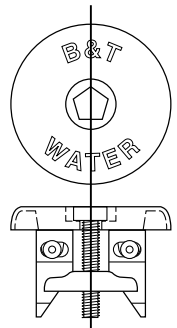


Fig. No.  
BTH 10374  
Old Style  
Repair Lid