

# Specialty Castings

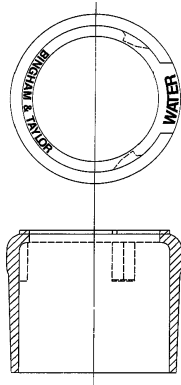


Fig. No. FCC-4  
4" Freeze Case Cap  
Weight - 25.5 lbs.

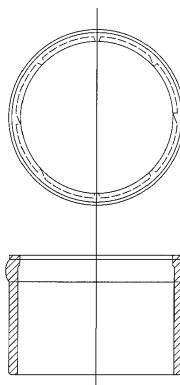


Fig. No. FCC-6  
6" Freeze Case Cap  
Weight - 34 lbs.

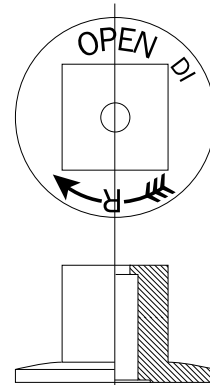


Fig. No. HON-01  
Hydrant Operating Nut  
Weight - 2 lbs.

Fig. No. FCC-4 & FCC-6

## Freeze Case Caps

- For use with Wood-Mathews hydrants and insert replacements from Clow, Kennedy and Mueller (K81AW)
- Plastic freeze casings also available upon request.
- Available in 4" and 6" sizes.

Fig. No. HON-01

## Hydrant Operating Nut

- 4" Ductile Iron - HON - Size 3/4"
- 6" Ductile Iron - HON - Size 7/8"
- 8" Ductile Iron - HON - Size 1"
- 12" Ductile Iron - HON - Size 1 1/4"

# Cleanout Boxes

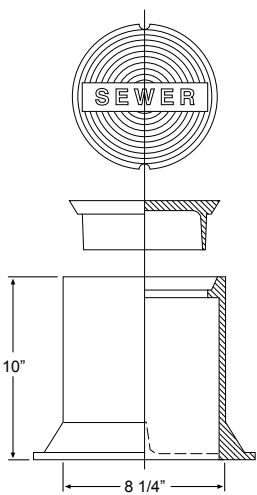


Fig. No. 107  
Cleanout Cover  
for 4" Cleanouts

- Cover weight - 11 lbs.
- Box weight - 29 lbs.

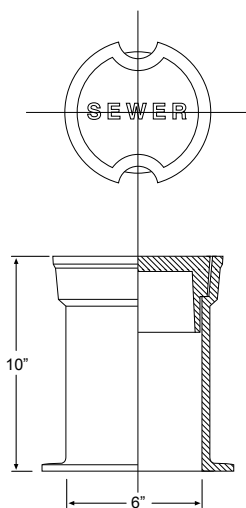
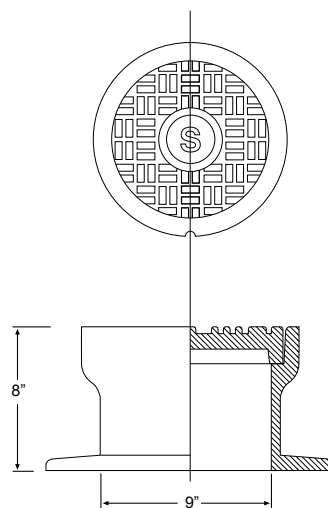


Fig. No. 8250  
Cleanout Cover  
for 4" Cleanouts

- Cover weight - 13 lbs.
- Box weight - 21 lbs.



Cleanout  
(Lamphole)  
Cover for 6" Cleanouts

- Cover weight - 20 lbs.
- Box weight - 62 lbs.

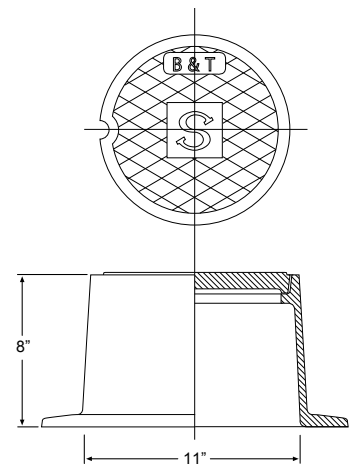


Fig. No. BT1975  
Cleanout Box

- Lids available in 3 styles:  
BT1975L plain  
BT1975LS has an "S"  
BT1975W has a "W"
- Cover weight - 15 lbs.
- Box weight - 44 lbs.