

# Meter Pits

- Injection molded • Rotational molded
- Straight wall • Bullet nose



*"Light weight,  
exceptional strength,  
Lower TCO!"*

Bingham & Taylor is the sturdy, trouble-free choice for easy installs, longest service life.

All 4 meter pit styles have excellent strength-to-weight ratio, outstanding thermal properties, and long-term compatibility with all soil types.



**Bingham & Taylor**

Est. 1849



# Injection Molded Straight Wall (Tapered)

Our Injection Molded Meter Pits are an engineered product, NOT a piece of PVC or metal pipe. Pipe has no bottom flange to resist settlement, no top flange for strength or fit, and lack engineered pipe openings.

## FEATURES:

- Engineered for exceptional strength
- 100% virgin material (no recycled content)
- Injection molded, impact resistant polyolefin copolymer
- Resists heat, cold, and UV
- Bright white color improves installation and use
- Internal base flange allows repositioning during installation
- Wide foot resists settling
- Ribbed for high strength and stiffness
- Lightweight for ease of handling
- Part numbers visible on top flange

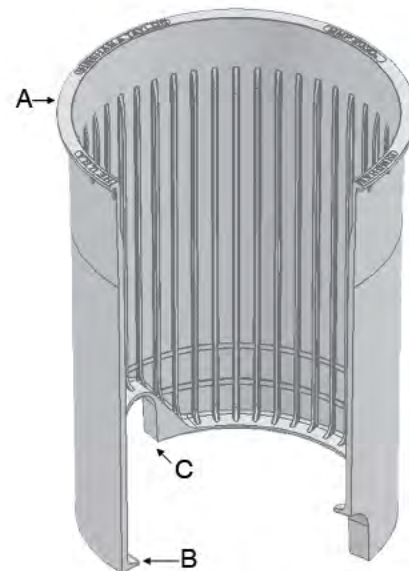
## PERFORMANCE:

- Load Rating – 20,000 pounds
- Deflection under 20,000 lb. load – less than 1/2"
- Highly impact resistant from -40° to 140°F

## DESIGN:

- Maximizes interior work space
- Top inside diameter – 18, 20 or 24"
- Height – 24, 30 or 36"
- Wall thickness – 0.200" (0.520" with ribs)

- A. 1" wide gusseted frame seat flange
- B. 1-1/2" wide base flange to resist settling
- C. Pipe entry (2) – 3x4"



**Warranty:** Bingham & Taylor warrants our meter pits to be free of manufacturing defects. Warranty is limited to replacement or purchase price as determined by Bingham & Taylor. Bingham & Taylor shall not be liable for any damages of any kind.



# Injection Molded Bullet Nose

Our Injection Molded Bullet Pits have the same great features as our straight wall pits, plus a larger inside diameter to accommodate meter sets. Their wide external flange resists settling.

## FEATURES:

- Engineered for exceptional strength
- 100% virgin material (no recycled content)
- Injection molded, impact resistant polyolefin copolymer
- Resists heat, cold, and UV
- Bright white color improves installation and use
- Internal base flange allows repositioning during installation
- Wide foot resists settling
- Ribbed for high strength and stiffness
- Lightweight for ease of handling
- Part numbers visible on top flange

## PERFORMANCE:

- Load Rating – 20,000 pounds
- Deflection under 20,000 lb. load – less than 1/2"
- Highly impact resistant from -40° to 140°F

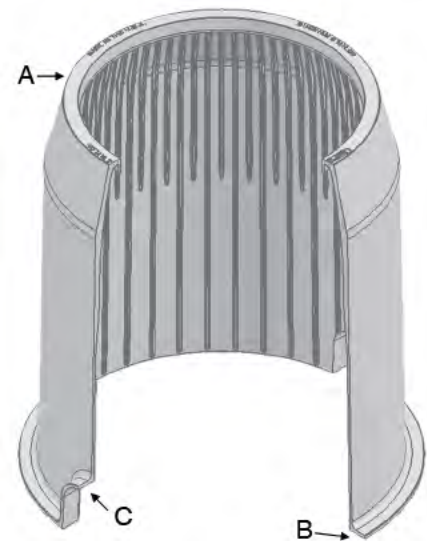
## DESIGN:

- Maximizes interior work space
- Top inside diameter – 18 or 20"
- Height – 30"
- Wall thickness – 0.200" (0.440" with ribs)

A. 0.825" wide reinforced frame seat

B. 1-1/2" wide base flange to resist settling

C. Pipe entry (2) – 3x4"



Perry Hyde: Director of Sales – Midwest,  
Office #540-825-8334 ext. 117 - Cell #540-229-1882  
phyde@binghamandtaylor.com

Dennis Quinn: Director of Sales – Mid-Atlantic and  
Canada, Office #540-825-8334 ext. 116  
Cell #540-219-4596 - dquinn@binghamandtaylor.com

Mark deLancellotti: Director of Sales – West,  
Office #540-825-8334 ext. 138  
Cell #540-229-2599 mdelance@binghamandtaylor.com

Matt Haan: Director of Sales – Southeast,  
Cell #704-507-2073  
mhaan@binghamandtaylor.com

Brad Washburn: Sales Manager – New England,  
Office #540-825-8334 ext. 137 - Cell #540-229-6008  
bwashburn@binghamandtaylor.com

Brandon Wheeler: Director of Sales – Central,  
Cell # 918-319-7900  
bwheeler@binghamandtaylor.com



# Rotational Molded Straight Wall (Tapered)

If you prefer a more traditional meter pit design, our Rotationally Molded Meter Pits offer exceptional strength and engineered quality with a wide external flange to resist settling.

## FEATURES:

- Engineered for exceptional strength
- Molded from impact resistant polyolefin polymer
- Resists heat, cold, and UV
- Bright white interior color improves installation and use
- Interior made from 100% virgin material
- Black exterior for long term UV resistance
- Wide foot resists settling
- Allows repositioning during installation
- Part numbers visible on top flange

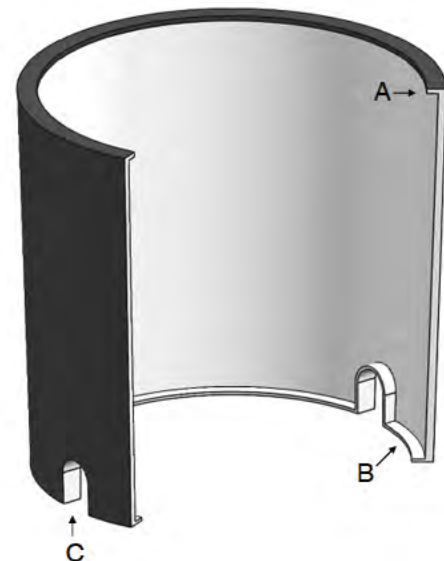
## PERFORMANCE:

- Load Rating – 20,000 pounds
- Deflection under 20,000 lb. load – Exhibits no permanent deformation
- Highly impact resistant from -40° to 140°F

## DESIGN:

- Maximizes interior work space
- Top inside diameter – 30 or 36"
- Height – 30 or 36"
- Wall thickness – 0.500" or greater

- A. 1.375" or wider frame seat flange
- B. 1.625" wide base flange to resist settling
- C. Pipe entry (2) – 3x4"



# Rotational Molded Bullet Nose

Our Rotationally Molded Bullet Pits have the same great features as our straight wall pits. Their larger inside diameter accomodates meter sets, and their wide external flange resists settling.

## FEATURES:

- Engineered for exceptional strength
- Molded from impact resistant polyolefin polymer
- Resists heat, cold, and UV
- Bright white interior color improves installation and use
- Interior made from 100% virgin material
- Black exterior for long term UV resistance
- Extra large interior work space
- Wide foot resists settling
- Part numbers visible on top flange

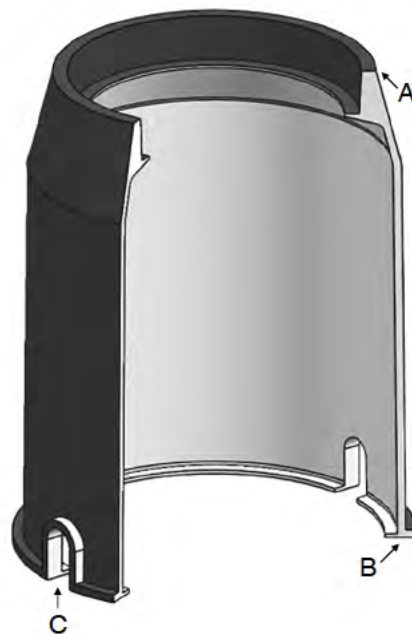
## PERFORMANCE:

- Load Rating – 20,000 pounds
- Deflection under 20,000 lb. load – Exhibits no permanent deformation
- Highly impact resistant from -40° to 140°F

## DESIGN:

- Maximizes interior work space
- Top inside diameter – 18 or 20"
- Body diameter – 22 or 24"
- Height – 30"
- Wall thickness – 0.500" or greater

- A. 1" wide reinforced frame seat
- B. 1.875" or wider base flange to resist settling
- C. Pipe entry (2) – 3x4"



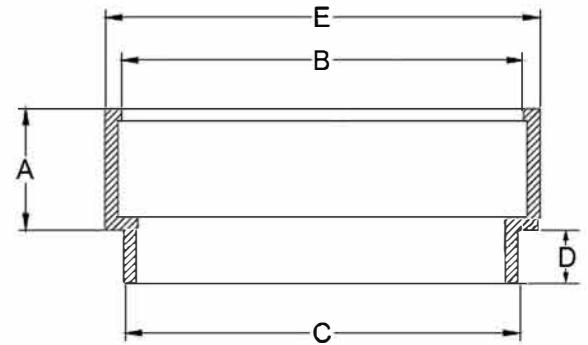
**Notes:** Information and specifications on all pages of this brochure may change due to product improvements or discontinuance without notice. Contact customer service for additional specification information or specific testing requirements.



# Universal Meter Pit Extensions

Our Universal Meter Pit Extensions fit multiple meter pit designs, including Injection Molded and Rotationally Molded Meter Pits. All extensions include the part number molded on the top flange for easy identification.

DESCRIPTION	PART CODE	A	B	C	D	E
Meter Pit Extension 18" X 3"	MPE1803	3.0	17.25	17.25	2.375	18.75
Meter Pit Extension 18" X 6"	MPE1806	6.0	17.25	17.25	2.375	18.75
Meter Pit Extension 20" X 2"	MPE2002	2.0	19.875	19.5	2.375	21.5
Meter Pit Extension 20" X 4"	MPE2004	4.0	19.875	19.5	2.375	21.5
Meter Pit Extension 20" X 6"	MPE2006	6.0	19.875	19.5	2.375	21.5
Meter Pit Extension 20" X 8"	MPE2008	8.0	19.875	19.5	2.375	21.5
Meter Pit Extension 20" X 22° Angle	MPE2022	1.75-10.375	19.88	19.625	2.38	21.5
Meter Pit Extension 24" X 3"	MPE2403	3.0	23.75	23.0	2.375	25.5
Meter Pit Extension 24" X 6"	MPE2406	6.0	23.75	23.0	2.375	25.5
Meter Pit Extension 30" X 3"	MPE3003	3.0	29.5	29.5	2.375	31.375
Meter Pit Extension 30" X 6"	MPE3006	6.0	29.5	29.5	2.375	31.375
Meter Pit Extension 36" X 3"	MPE3603	3.0	37.0	35.125	3.5	38.0
Meter Pit Extension 36" X 6"	MPE3606	6.0	37.0	35.125	3.5	38.0



## Meter Pit Truck Loading Chart

INJECTION MOLDED PART CODE	TRUCK LOAD QUANTITY	ROTATIONAL MOLDED PART CODE	TRUCK LOAD QUANTITY
MMP182230	300	PMP182230	300
MMP1824	620	PMP1836	310
MMP1830	465	PMP202430	300
MMP1836	310	PMP2030	360
MMP202430	300	PMP2430	300
MMP2030	360	PMP3030	171
MMP2036	240	PMP3630	96
MMP2430	300	PMP3636	64

- Freight terms FOB Fredericksburg, VA. Check with your sales representative regarding full freight order opportunities.
- Meter pits may be combined with cast iron products.
- To prevent damage and difficulty in separating products, we do NOT nest meter pit shipments.
- With exception of combined orders, meter pit orders ship within one week, A.R.O.