

# Cathodic Protection Test Boxes



Bingham & Taylor is committed to helping you simplify corrosion monitoring, and to providing you with a quality product, on time.

Bingham and Taylor manufactures cast iron and plastic cathodic protection test stations in sizes and styles to fit your applications.

Test stations are available in diameters from 2-1/2" to 12", with various extensions available. Models are manufactured from high impact, wear resistant ABS plastic with lightweight or heavy-duty cast iron rims and lids. Lightweight rims are used behind the curb; heavy-duty cast iron rims are designed for roadway installation.

Test points are on the lid at the surface, or on terminal test boards, located on the underside of the lid. Test boards are tailored to individual customer requirements.

Lids are available in locking and non-locking styles. Standard markings include "TEST" and "CP TEST".

Custom markings, custom wiring and accessories are available.

*"Smart, secure asset protection; plus quick, trouble-free access where authorized"*



**Bingham & Taylor**

Est. 1849



**American  
Iron and Steel  
Institute**



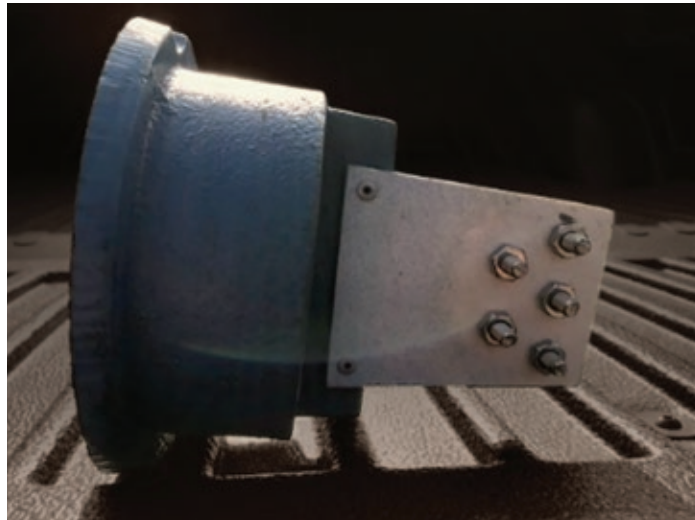
# Does this look familiar?

You open a valve box and are greeted by a tangle of tracer wire.  
*(Or, worse, there is no tracer wire!)*



Bingham and Taylor CP Test Stations are designed to accommodate tracer wire, so wire stays intact when the valve key is used.

The test station is installed next to the valve box; simply attach the tracer wire to our terminal test board, which is installed at the bottom of the test station lid. This makes it easy for the locator to connect to the tracer wire when locating buried underground utilities.



Perry Hyde: Director of Sales – Midwest,  
Office #540-825-8334 ext. 117 - Cell #540-229-1882  
phyde@binghamandtaylor.com

Dennis Quinn: Director of Sales – Mid-Atlantic and  
Canada, Office #540-825-8334 ext. 116  
Cell #540-219-4596 - dquinn@binghamandtaylor.com

Mark deLancellotti: Director of Sales – West,  
Office #540-825-8334 ext. 138  
Cell #540-229-2599 mdlance@binghamandtaylor.com

Matt Haan: Director of Sales – Southeast,  
Cell #704-507-2073  
mhaan@binghamandtaylor.com

Brad Washburn: Sales Manager – New England,  
Office #540-825-8334 ext. 137 - Cell #540-229-6008  
bwashburn@binghamandtaylor.com

Brandon Wheeler: Director of Sales – Central,  
Cell # 918-319-7900  
bwheeler@binghamandtaylor.com